



**Water Monitoring Result at M5B - Central Cooling Water Intake Group
Mid-Flood Tide**

Date	Time	Weather Condition	Sampling Depth		Water Temperature			pH			Salinity		DO Saturation		DO		Turbidity		Suspended Solids					
					°C			-			ppt		%		mg/L		NTU		mg/L					
			m	Value	Average	Value	Average	Value	Average	Value	Average	Value	Average	Value	Average	Value	Average	Value	Average	Value	Average			
3/1/15	16:00	Fine	Middle	3.0	17.80	17.80	17.85	8.19	8.19	8.20	31.67	31.67	31.64	84.3	83.5	83.4	6.62	6.56	6.54	3.47	3.49	3.49	3	4.00
	16:02		Middle	3.0	17.90	17.90		8.20	8.20		31.61	31.61		83.4	82.4		6.54	6.45		3.49	3.51		5	
6/1/15	7:57	Fine	Middle	3.0	18.60	18.60	18.65	8.21	8.21	8.21	31.64	31.64	31.62	82.4	82.2	82.8	6.38	6.36	6.40	4.13	4.13	4.10	4	4.00
	7:59		Middle	3.0	18.70	18.70		8.21	8.21		31.60	31.60		83.5	83.0		6.45	6.42		4.10	4.05		4	
8/1/15	9:40	Fine	Middle	3.5	17.40	17.40	17.40	8.16	8.16	8.17	31.48	31.48	31.49	88.2	86.6	87.7	7.00	6.87	6.95	3.01	3.00	3.01	9	9.00
	9:42		Middle	3.5	17.40	17.40		8.17	8.17		31.49	31.49		87.4	88.4		6.93	7.01		3.01	3.03		9	
10/1/15	12:10	Fine	Middle	3.5	17.80	17.80	17.80	8.15	8.15	8.15	31.45	31.45	31.45	90.2	90.4	90.2	7.10	7.12	7.10	8.17	8.19	8.11	6	6.50
	12:12		Middle	3.5	17.80	17.80		8.15	8.15		31.45	31.45		90.9	89.2		7.16	7.03		8.08	7.99		7	
12/1/15	11:15	Fine	Middle	3.5	17.10	17.10	17.05	8.13	8.13	8.13	31.36	31.36	31.37	86.9	87.7	85.8	6.94	7.00	6.85	4.40	4.40	4.41	5	4.50
	11:17		Middle	3.5	17.00	17.00		8.13	8.13		31.37	31.37		83.7	84.7		6.69	6.77		4.41	4.42		4	
14/1/15	11:02	Fine	Middle	3.0	16.80	16.80	16.75	7.62	7.62	7.63	31.70	31.70	31.71	84.0	83.1	83.1	6.79	6.68	6.68	3.99	3.98	3.98	4	4.00
	11:04		Middle	3.0	16.70	16.70		7.63	7.63		31.72	31.72		82.7	82.4		6.64	6.61		3.98	3.97		4	
16/1/15	13:55	Fine	Middle	3.5	18.90	18.90	18.90	8.12	8.12	8.12	31.16	31.16	31.15	90.7	90.3	90.4	7.00	6.96	6.96	3.04	3.00	2.97	4	4.00
	13:57		Middle	3.5	18.90	18.90		8.12	8.12		31.14	31.14		90.3	90.2		6.95	6.94		2.95	2.89		4	
19/1/15	15:00	Fine	Middle	3.0	17.90	17.90	18.05	8.03	8.03	8.03	31.01	31.01	31.00	84.9	84.2	83.9	6.67	6.61	6.64	4.25	4.23	4.17	5	5.00
	15:02		Middle	3.0	18.20	18.20		8.02	8.02		30.99	30.99		82.9	83.4		6.61	6.65		4.10	4.10		5	
21/1/15	17:14	Fine	Middle	3.5	17.70	17.70	17.75	8.03	8.03	8.03	31.19	31.19	31.18	82.3	81.1	81.1	6.49	6.40	6.40	7.56	7.57	7.63	7	7.50
	17:16		Middle	3.5	17.80	17.80		8.03	8.03		31.17	31.17		80.9	80.1		6.37	6.32		7.58	7.79		8	
23/1/15	8:30	Fine	Middle	3.5	16.60	16.60	16.55	8.07	8.07	8.08	31.20	31.20	31.21	88.0	88.5	88.2	7.12	7.16	7.13	6.71	6.70	6.70	6	6.50
	8:32		Middle	3.5	16.50	16.50		8.08	8.08		31.21	31.21		88.2	87.9		7.14	7.11		6.68	6.69		7	
26/1/15	11:36	Fine	Middle	3.5	18.10	18.10	18.10	8.04	8.04	8.04	31.24	31.24	31.24	87.1	86.9	86.9	6.83	6.80	6.81	6.69	6.55	6.52	8	8.50
	11:38		Middle	3.5	18.10	18.10		8.04	8.04		31.24	31.24		86.7	86.9		6.79	6.80		6.42	6.41		9	
28/1/15	14:37	Fine	Middle	3.5	17.20	17.20	17.20	8.06	8.06	8.06	31.23	31.23	31.24	78.9	77.9	77.6	6.29	6.22	6.19	4.22	4.22	4.23	5	5.00
	14:39		Middle	3.5	17.20	17.20		8.06	8.06		31.24	31.24		77.0	76.4		6.14	6.10		4.23	4.25		5	
30/1/15	14:15	Fine	Middle	3.5	17.70	17.70	17.75	8.10	8.10	8.10	31.37	31.37	31.37	89.7	89.4	89.8	7.07	7.05	7.08	4.24	4.23	4.24	3	3.50
	14:17		Middle	3.5	17.80	17.80		8.10	8.10		31.37	31.37		90.3	89.9		7.11	7.08		4.23	4.24		4	

Remarks:
Single underline denotes exceedance over Action Level.
Double underline denotes exceedance over Limit Level.



**Water Monitoring Result at M5B - Central Colling Water Intake Group
Mid-Ebb Tide**

Date	Time	Weather Condition	Sampling Depth		Water Temperature			pH			Salinity			DO Saturation			DO			Turbidity			Suspended Solids	
					°C		-		ppt		%		mg/L		NTU		mg/L							
					Value	Average	Value	Average	Value	Average	Value	Average	Value	Average	Value	Average	Value	Average	Value	Average	Value	Average		
3/1/15	1:50	Cloudy	Middle	3.0	17.00	17.00	17.00	7.86	7.86	7.86	31.40	31.40	31.40	94.4	93.8	94.2	7.55	7.51	7.54	3.11	3.51	3.32	3	3.50
	1:51		Middle	3.0	17.00	17.00		7.86	7.86		31.40	31.40		94.5	94.2		7.56	7.53		3.46	3.18		4	
6/1/15	2:52	Fine	Middle	3.0	18.50	18.50	18.55	7.75	7.75	7.76	31.45	31.45	31.45	91.8	92.1	92.4	7.12	7.15	7.17	1.89	1.95	1.97	<2	<2
	2:53		Middle	3.0	18.60	18.60		7.76	7.76		31.44	31.44		92.6	93.1		7.19	7.23		1.98	2.04		<2	
8/1/15	1:55	Cloudy	Middle	3.0	17.10	17.10	17.10	7.82	7.82	7.83	31.48	31.48	31.48	88.9	89.9	88.8	7.18	7.22	7.12	2.27	2.12	2.13	2	2.50
	1:56		Middle	3.0	17.10	17.10		7.83	7.83		31.48	31.48		88.1	88.3		7.03	7.04		2.03	2.10		3	
10/1/15	3:05	Cloudy	Middle	3.5	16.40	16.40	16.40	7.89	7.89	7.90	31.43	31.43	31.44	92.6	95.3	94.1	7.55	7.71	7.63	1.90	1.85	1.97	3	3.00
	3:06		Middle	3.5	16.40	16.40		7.91	7.89		31.44	31.44		93.9	94.7		7.59	7.66		2.00	2.12		3	
12/1/15	4:10	Cloudy	Middle	3.0	17.10	17.10	17.10	7.86	7.86	7.87	31.33	31.33	31.34	92.7	92.9	92.9	7.40	7.43	7.42	2.24	2.21	2.15	2	2.00
	4:11		Middle	3.0	17.10	17.10		7.87	7.87		31.35	31.35		92.5	93.4		7.38	7.46		2.11	2.05		2	
14/1/15	18:58	Fine	Middle	3.5	15.50	15.50	15.50	7.91	7.9*1	7.94	31.20	31.20	31.20	93.8	95.7	94.6	7.74	7.90	7.81	4.22	4.19	4.18	5	4.50
	18:59		Middle	3.5	15.50	15.50		7.95	7.95		31.20	31.20		94.0	94.9		7.76	7.84		4.17	4.14		4	
16/1/15	19:32	Cloudy	Middle	3.5	17.30	17.30	17.30	7.83	7.83	7.84	30.83	30.78	30.97	96.5	98.0	96.3	7.69	7.80	7.67	4.40	4.43	4.37	4	4.00
	19:33		Middle	3.5	17.30	17.30		7.84	7.84		31.14	31.14		95.4	95.3		7.59	7.58		4.34	4.31		4	
19/1/15	1:47	Cloudy	Middle	3.0	15.70	15.70	15.70	7.91	7.91	7.91	30.75	30.76	30.78	85.3	86.0	86.1	7.01	7.08	7.08	5.25	5.41	5.25	7	6.50
	1:48		Middle	3.0	15.70	15.70		7.91	7.91		30.80	30.80		86.4	86.5		7.11	7.11		5.21	5.12		6	
21/1/15	11:45	Fine	Middle	3.0	17.30	17.30	17.35	8.09	8.09	8.09	31.21	31.21	31.21	89.9	90.6	90.4	7.15	7.20	7.18	6.40	6.39	6.44	6	6.50
	11:47		Middle	3.0	17.40	17.40		8.09	8.09		31.20	31.20		90.5	90.4		7.19	7.19		6.52	6.43		7	
23/1/15	14:15	Fine	Middle	3.5	17.60	17.60	17.70	8.04	8.04	8.04	31.25	31.25	31.24	87.8	88.3	88.1	6.93	6.97	6.95	3.58	3.57	3.59	5	5.00
	14:17		Middle	3.5	17.80	17.80		8.04	8.04		31.22	31.22		88.4	87.8		6.98	6.93		3.60	3.62		5	
26/1/15	16:20	Fine	Middle	3.0	18.10	18.10	18.10	8.00	8.00	8.00	31.24	31.24	31.24	82.2	83.6	83.3	6.44	6.54	6.52	6.05	6.05	6.07	4	5.00
	16:22		Middle	3.0	18.10	18.10		8.00	8.00		31.24	31.24		84.4	83.0		6.60	6.49		6.07	6.10		6	
28/1/15	20:03	Cloudy	Middle	3.5	17.10	17.10	17.10	7.86	7.86	7.86	31.22	31.22	31.33	96.0	96.1	96.6	7.51	7.52	7.56	2.86	2.97	2.84	3	3.00
	20:04		Middle	3.5	17.10	17.10		7.86	7.86		31.44	31.45		98.0	96.4		7.66	7.54		2.81	2.73		3	
30/1/15	21:45	Cloudy	Middle	3.5	17.20	17.20	17.20	8.00	8.00	8.00	31.52	31.52	31.52	96.5	95.3	96.4	7.68	7.57	7.66	4.31	4.21	4.21	3	2.50
	21:46		Middle	3.5	17.20	17.20		8.00	8.00		31.52	31.52		96.8	96.8		7.69	7.69		4.17	4.15		2	

Remarks:
Single underline denotes exceedance over Action Level.
Double underline denotes exceedance over Limit Level.



**Water Monitoring Result at Culvert J - Reference Station
Mid-Flood Tide**

Date	Time	Weather Condition	Sampling Depth		Water Temperature			pH			Salinity		DO Saturation		DO		Turbidity		Suspended Solids					
					°C		-		ppt		%		mg/L		NTU		mg/L							
			m	Value	Average	Value	Average	Value	Average	Value	Average	Value	Average	Value	Average	Value	Average	Value	Average					
3/1/15	16:04	Fine	Middle	3.0	17.70	17.70	17.70	8.21	8.21	8.21	31.37	31.37	31.36	86.4	85.5	84.5	6.81	6.74	6.66	2.84	2.82	2.83	3	4.00
	16:06		Middle	3.0	17.70	17.70		8.21	8.21		31.35	31.35		83.8	82.1		6.61	6.47		2.82	2.82		5	
6/1/15	8:01	Fine	Middle	3.0	18.40	18.40	18.40	8.21	8.21	8.21	31.55	31.55	31.55	87.0	86.5	85.3	6.77	6.72	6.64	3.89	3.80	3.75	4	4.50
	8:03		Middle	3.0	18.40	18.40		8.21	8.21		31.55	31.55		84.8	83.0		6.60	6.46		3.66	3.63		5	
8/1/15	9:35	Fine	Middle	3.0	17.20	17.20	17.20	8.16	8.16	8.16	31.40	31.40	31.41	82.2	82.7	82.7	6.55	6.58	6.59	5.50	5.48	5.46	9	8.50
	9:37		Middle	3.0	17.20	17.20		8.16	8.16		31.41	31.41		83.0	82.9		6.61	6.61		5.43	5.41		8	
10/1/15	12:15	Fine	Middle	3.0	17.70	17.70	17.70	8.15	8.15	8.15	31.28	31.28	31.28	81.9	82.3	82.0	6.46	6.50	6.48	3.27	3.28	3.28	4	3.50
	12:17		Middle	3.0	17.70	17.70		8.15	8.15		31.28	31.28		82.3	81.6		6.50	6.44		3.28	3.28		3	
12/1/15	11:20	Fine	Middle	3.0	17.00	17.00	16.90	8.13	8.13	8.13	31.26	31.26	31.27	77.0	78.7	78.3	6.18	6.32	6.29	3.70	3.67	3.67	7	6.50
	11:22		Middle	3.0	16.80	16.80		8.13	8.13		31.27	31.27		78.7	78.7		6.32	6.32		3.66	3.65		6	
14/1/15	11:08	Fine	Middle	2.5	16.90	16.90	16.85	7.79	7.79	7.80	31.35	31.35	31.33	78.3	78.7	78.8	6.28	6.32	6.33	4.77	4.77	4.80	3	3.50
	11:10		Middle	2.5	16.80	16.80		7.80	7.80		31.30	31.30		79.1	79.2		6.35	6.36		4.79	4.85		4	
16/1/15	14:00	Fine	Middle	3.0	18.10	18.10	18.15	8.13	8.13	8.13	30.91	30.91	30.91	88.3	88.7	88.5	6.92	6.95	6.93	5.44	5.42	5.49	5	5.00
	14:02		Middle	3.0	18.20	18.20		8.13	8.13		30.90	30.90		88.6	88.3		6.94	6.92		5.55	5.56		5	
19/1/15	15:04	Fine	Middle	3.0	17.50	17.50	17.65	8.03	8.03	8.03	31.05	31.05	31.05	88.1	87.6	87.5	6.98	6.93	6.93	3.95	3.91	3.95	5	5.50
	15:06		Middle	3.0	17.80	17.80		8.03	8.03		31.04	31.04		87.3	87.0		6.91	6.88		3.97	3.98		6	
21/1/15	17:18	Fine	Middle	3.5	17.40	17.40	17.50	8.03	8.03	8.03	31.08	31.08	31.07	78.0	78.2	78.0	6.20	6.21	6.19	5.71	5.58	5.63	7	7.00
	17:20		Middle	3.5	17.60	17.60		8.03	8.03		31.06	31.06		77.6	78.0		6.16	6.19		5.61	5.62		7	
23/1/15	8:38	Fine	Middle	3.0	16.40	16.40	16.40	8.07	8.07	8.07	31.06	31.06	31.06	78.4	79.2	78.9	6.36	6.43	6.40	6.65	6.78	6.61	5	5.50
	8:40		Middle	3.0	16.40	16.40		8.07	8.07		31.05	31.05		78.9	78.9		6.40	6.40		6.59	6.40		6	
26/1/15	11:30	Fine	Middle	3.0	18.50	18.50	18.55	8.02	8.02	8.02	30.99	30.99	30.99	79.1	80.5	79.9	6.15	6.26	6.21	5.91	6.09	6.06	8	8.00
	11:32		Middle	3.0	18.60	18.60		8.02	8.02		30.99	30.99		80.0	79.9		6.22	6.21		6.12	6.12		8	
28/1/15	14:32	Fine	Middle	3.5	17.20	17.20	17.25	8.04	8.04	8.04	30.75	30.75	30.74	69.7	69.4	68.7	5.57	5.55	5.49	5.15	5.17	5.18	5	4.50
	14:34		Middle	3.5	17.30	17.30		8.04	8.04		30.72	30.72		68.0	67.6		5.43	5.40		5.19	5.19		4	
30/1/15	14:10	Fine	Middle	3.0	18.10	18.10	18.20	8.07	8.07	8.07	30.87	30.87	30.87	81.3	82.1	81.9	6.37	6.43	6.41	3.89	3.83	3.79	3	3.50
	14:12		Middle	3.0	18.30	18.30		8.07	8.07		30.86	30.86		82.1	82.0		6.43	6.42		3.75	3.69		4	

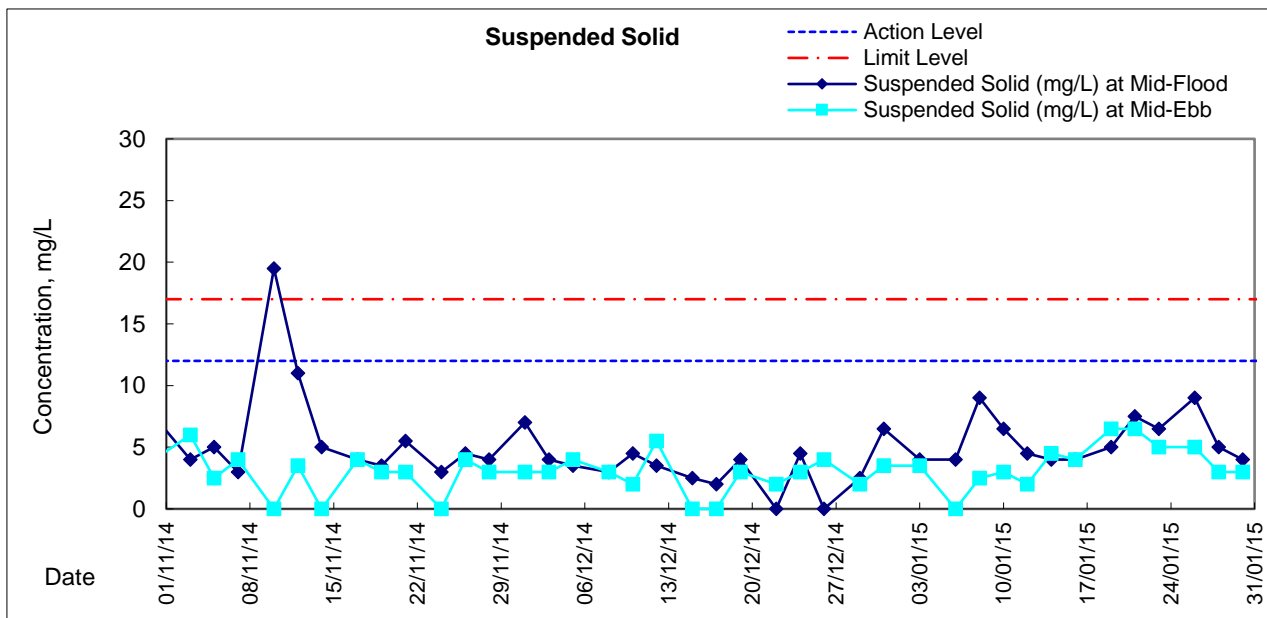
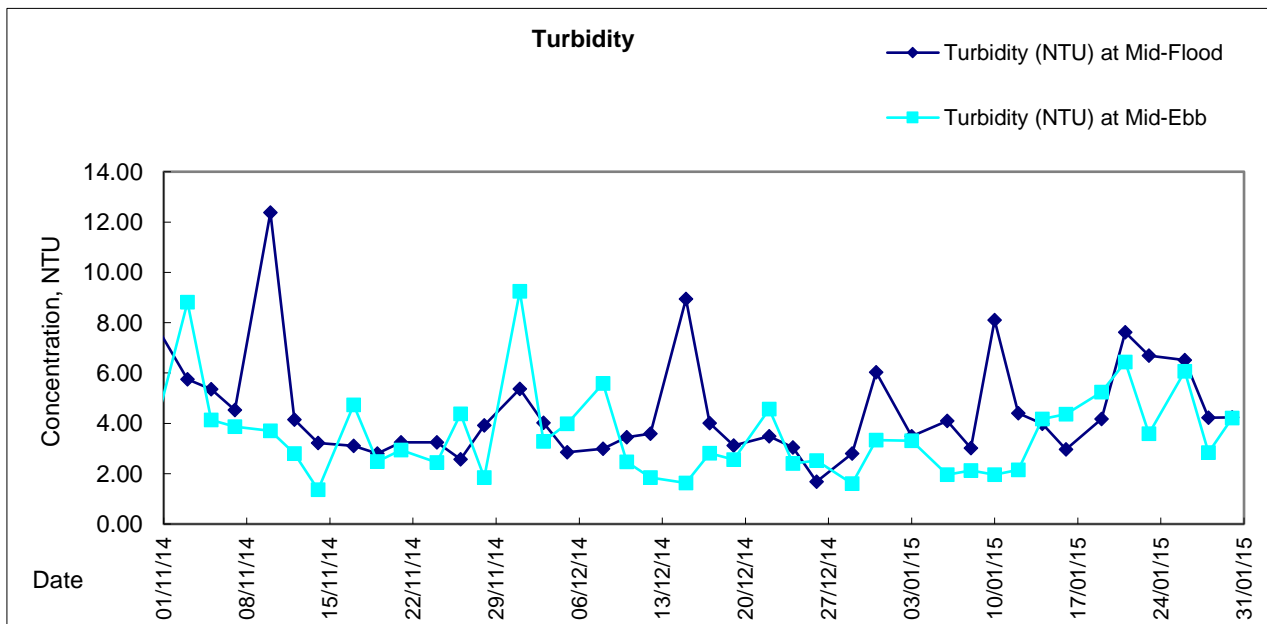
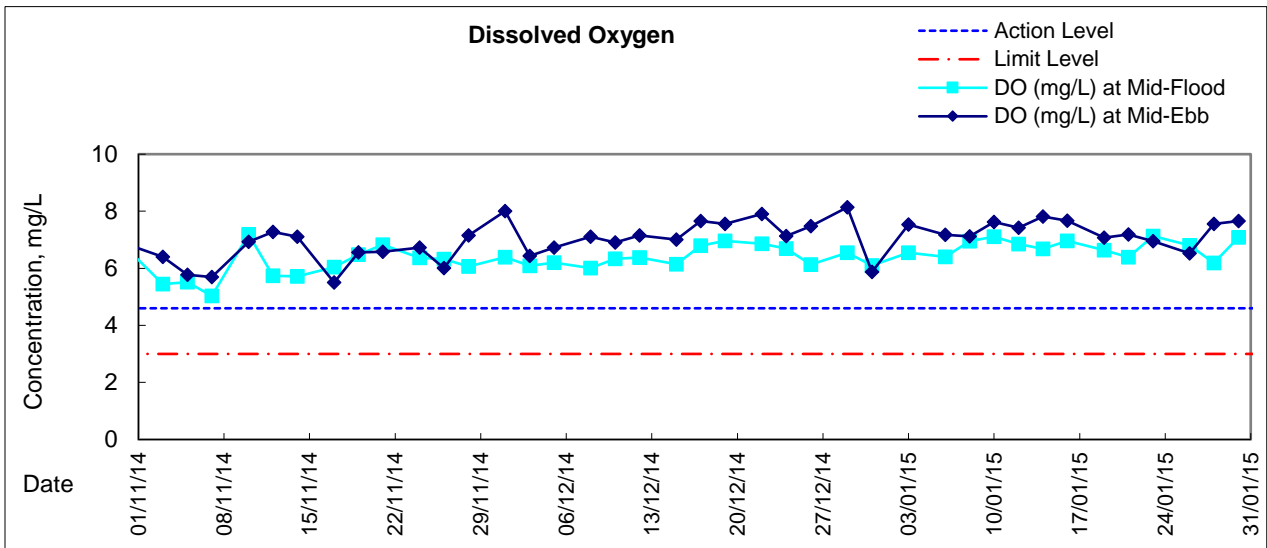


**Water Monitoring Result at Culvert J - Reference Station
Mid-Ebb Tide**

Date	Time	Weather Condition	Sampling Depth		Water Temperature		pH			Salinity		DO Saturation		DO		Turbidity		Suspended Solids						
					°C		-			ppt		%		mg/L		NTU		mg/L						
					Value	Average	Value	Average	Value	Average	Value	Average	Value	Average	Value	Average	Value	Average	Value	Average				
3/1/15	1:55	Cloudy	Middle	3	17.10	17.10	17.10	7.87	7.87	7.88	31.43	31.43	31.44	86.0	86.2	87.1	6.86	6.89	6.96	2.52	2.39	2.40	2	3.00
	1:56		Middle	3	17.10	17.10		7.89	7.89		31.44	31.44		87.8	88.4		7.03	7.05		2.34	2.36		4	
6/1/15	2:58	Fine	Middle	3	18.60	18.60	18.60	7.79	7.79	7.78	27.53	27.53	27.54	53.1	52.7	52.7	4.21	4.18	4.18	14.70	14.68	14.63	9	9.00
	2:59		Middle	3	18.60	18.60		7.77	7.77		27.54	27.54		52.6	52.5		4.17	4.17		14.65	14.49		9	
8/1/15	2:04	Cloudy	Middle	3	17.40	17.40	17.35	7.85	7.85	7.85	28.65	28.66	28.66	65.7	66.6	66.4	5.31	5.38	5.37	5.42	5.54	5.41	2	2.50
	2:05		Middle	3	17.30	17.30		7.84	7.84		28.66	28.66		66.4	66.9		5.36	5.41		5.25	5.43		3	
10/1/15	3:11	Cloudy	Middle	3	16.80	16.80	16.80	7.93	7.93	7.93	27.45	27.45	27.39	62.5	63.4	63.5	5.14	5.22	5.23	7.31	7.24	7.19	4	4.50
	3:12		Middle	3	16.80	16.80		7.92	7.92		27.33	27.33		64.1	64.0		5.28	5.27		7.03	7.17		5	
12/1/15	4:18	Cloudy	Middle	3	17.30	17.30	17.25	7.89	7.89	7.89	28.12	28.12	28.12	65.7	65.6	65.6	5.33	5.33	5.32	5.36	5.37	5.29	6	5.50
	4:19		Middle	3	17.20	17.20		7.88	7.89		28.12	28.12		65.4	65.6		5.31	5.32		5.34	5.10		5	
14/1/15	19:05	Fine	Middle	3	15.70	15.70	15.70	8.01	8.01	8.00	25.22	25.22	25.22	63.1	62.9	62.4	5.72	5.36	5.41	16.04	15.88	15.92	5	5.00
	19:06		Middle	3	15.70	15.70		8.00	7.99		25.21	25.21		61.7	61.9		5.33	5.23		15.84	15.93		5	
16/1/15	19:40	Cloudy	Middle	3	17.40	17.40	17.40	7.89	7.89	7.89	27.15	27.15	27.12	76.3	76.7	77.2	6.21	6.23	6.29	14.50	14.43	14.43	5	5.50
	19:41		Middle	3	17.40	17.40		7.88	7.88		27.08	27.08		77.4	78.4		6.34	6.38		14.47	14.33		6	
19/1/15	1:54	Cloudy	Middle	3	15.80	15.80	15.80	7.96	7.96	7.96	30.73	30.74	30.74	81.5	81.7	82.6	6.70	6.71	6.79	6.62	6.82	6.57	5	5.50
	1:55		Middle	3	15.80	15.80		7.96	7.96		30.74	30.74		84.6	82.6		6.98	6.76		6.55	6.29		6	
21/1/15	11:40	Fine	Middle	3	17.50	17.50	17.50	8.07	8.07	8.07	31.17	31.17	31.17	79.0	80.0	79.8	6.28	6.34	6.32	3.29	3.29	3.29	6	5.50
	11:42		Middle	3	17.50	17.50		8.07	8.07		31.17	31.17		80.4	79.7		6.36	6.30		3.29	3.29		5	
23/1/15	14:12	Fine	Middle	4	17.90	17.90	18.00	8.01	8.01	8.01	31.07	31.07	31.13	74.1	73.7	73.4	5.83	5.80	5.78	4.48	4.48	4.39	7	6.00
	14:14		Middle	4	18.10	18.10		8.01	8.01		31.19	31.19		73.0	72.9		5.74	5.73		4.30	4.31		5	
26/1/15	16:15	Fine	Middle	3	18.70	18.70	18.80	7.95	7.95	7.95	30.49	30.49	30.49	76.3	75.4	75.5	5.92	5.87	5.88	4.71	4.70	4.78	5	4.50
	16:17		Middle	3	18.90	18.90		7.95	7.95		30.49	30.49		75.3	75.0		5.84	5.89		4.90	4.81		4	
28/1/15	20:13	Cloudy	Middle	3	17.20	17.20	17.20	7.91	7.91	7.90	25.55	25.55	25.54	29.3	29.5	29.4	2.37	2.39	2.38	7.95	7.86	7.88	11	11.00
	20:14		Middle	3	17.20	17.20		7.88	7.88		25.52	25.52		29.4	29.3		2.38	2.37		7.88	7.82		11	
30/1/15	21:52	Cloudy	Middle	3	17.10	17.10	17.10	8.02	8.02	8.02	30.15	30.15	23.39	83.2	83.3	83.0	6.69	6.70	6.67	6.75	6.61	6.68	4	4.00
	21:53		Middle	3	17.10	17.10		8.02	8.02		30.13	3.13		83.0	82.4		6.67	6.62		6.63	6.71		4	



Graphic Presentation of Water Quality Result of M5B - Central Cooling Water Intake Groups





Graphic Presentation of Water Quality Result of Culvert J - Reference Station

